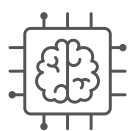
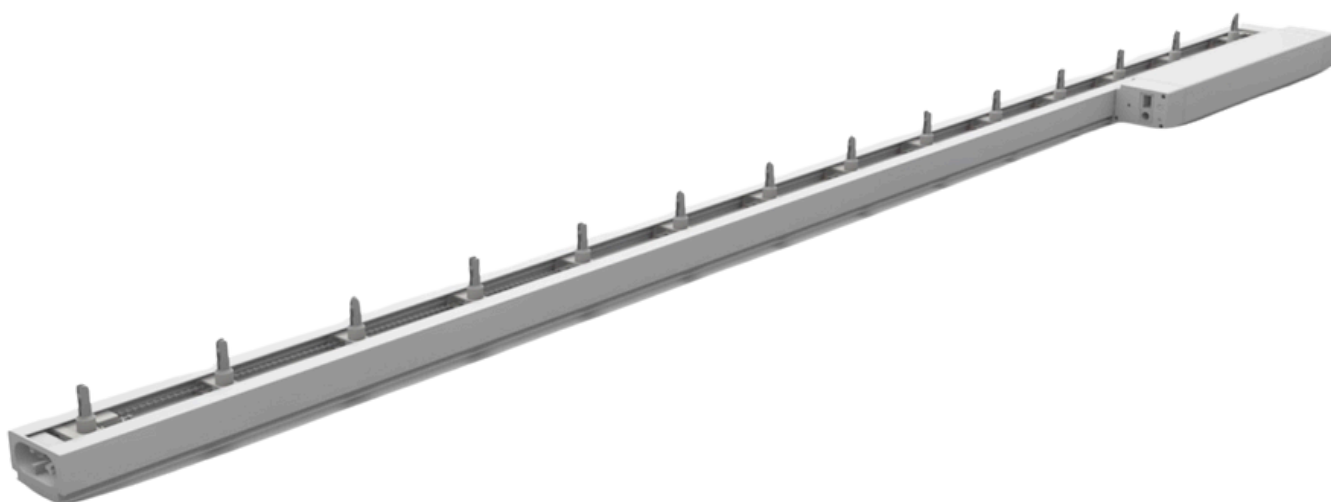
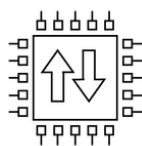




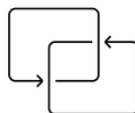
VERTICAL BIDI



Automatic limit
switch adjustment



Electronic
limit switch



Two-way
protocol



Radio control

VERTICAL BIDI

The Bidi Vertical Motor offers advanced automation for vertical blinds, with a fully automatic, bidirectional electronic limit switch. It includes an RJ11 connector for control via a 5V/12V low voltage push button/inverter and for easy connection to home automation control units. In addition, this motor goes further, allowing precise control of the opening, closing and orientation of the 89mm adjustable slats.

REFERENCE



VERTICAL BIDI | 80.023.001

KIK ORIENTA | 75.003.015

Fully automatic electronic limit switch.

Allows control of the opening, closing and orientation of the adjustable slats of vertical curtains.

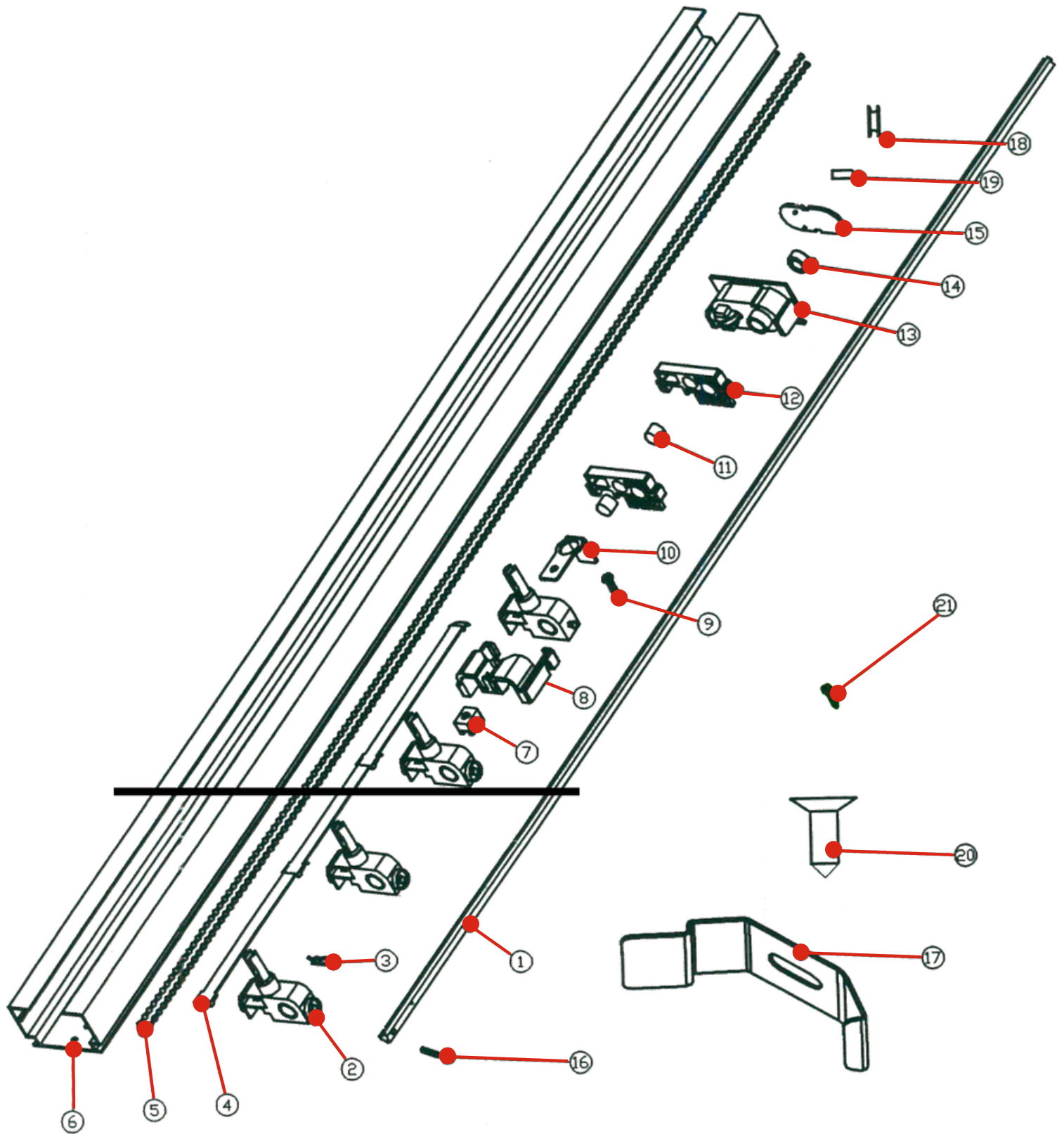
Up to 6 meters of curtain rail.

RJ11 connector with multiple outputs (5v, 12v, push button/inverter, etc.)






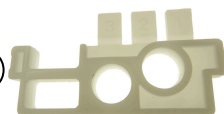












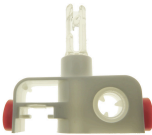



TECHNICAL CHARACTERISTICS

Par-nominal	Speed	Feeding	Nominal power	Amperage	Working time	Max rotations	Degree of protection	Length	Max Weight
15 Nm	6 cm/s	12v D.C.	8 In	0.66 A	4 min	∞	IP 20	275 mm	10 Kg

RAIL BREAKDOWN

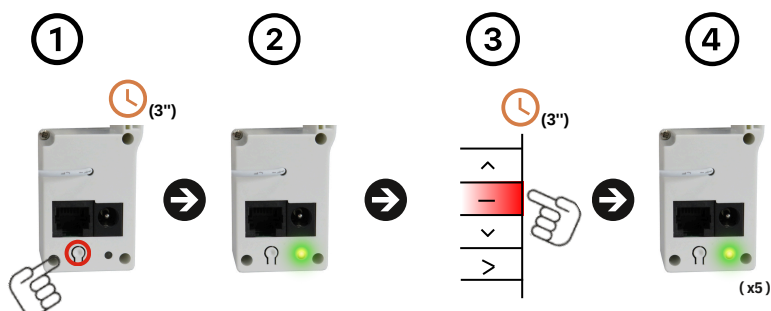


RAIL ACCESSORIES

		12V 4A MOTOR POWER ADAPTER 80.023.002			ROD STOP WASHER 80.023.010
21		SCREW TO 80.023.003			ALUMINUM RAIL TERMINAL 80.023.011
20		SCREW B 80.023.004			FINAL CART 80.023.012
19		RUNNER'S PASSER 80.023.005			MEDIUM SUPPORT MAGNET 80.023.013
18		CORRIDOR 80.023.006			CHAIN STOP CLAMP 80.023.014
17		RAIL SUPPORT 80.023.007			RAIL STOP SCREW 80.023.015
16		SCREW C 80.023.008			TOPE CADENILLA 80.023.016
15		TERMINAL COVER 80.023.009			CHAIN STOPPER 80.023.017
3		PIN ROD 80.023.021			ALUMINUM RAIL 4M/U. 80.023.018
2		CART ORIENTATION 80.023.022			CADENILLA 500M/U. 80.023.019
1		VARILLA 6M/U 80.023.023			SPACER 80.023.020

INSTRUCTIONS:

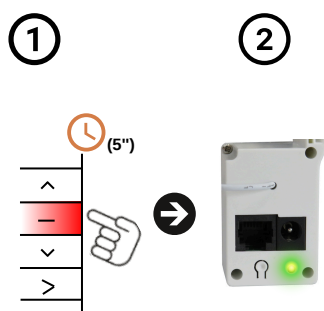
1. LINK FIRST TRANSMITTER



Procedure:

1. Press the engine programming button (PROG) for two seconds (2").
2. The green LED on the motor will illuminate.
3. Press (STOP) on the transmitter to record for three seconds (3").
4. The green LED on the motor will flash five times (x5).

2. SELF-LEARNING OF LIMIT SWITCHES



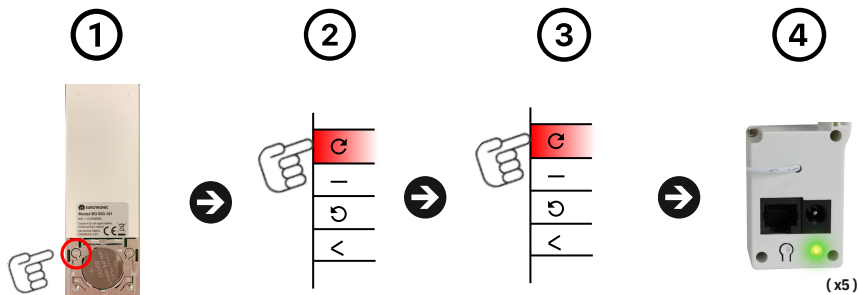
Procedure:

1. We will hold down the (STOP) button on an already recorded transmitter for five seconds (5").
2. The Green LED will flash slowly to indicate that the motor is in the Self-Learning phase.

Next we will let the engine do the following recognition sequences:

1. Complete closure of the curtain - Slat orientation in opening - Complete opening of the curtain.
2. Once the motor finishes, the green LED will indicate several slow flashes, indicating the end of the self-learning process.

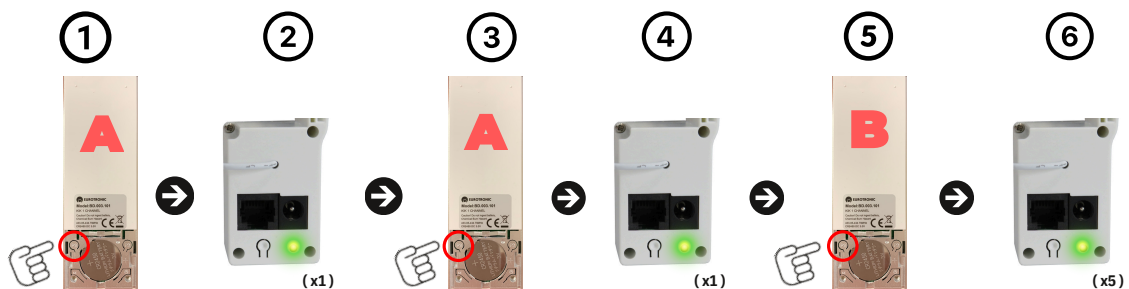
3. CONTINUOUS OR PULSE MODE



Procedure:

1. Press the button (P2) located behind the transmitter.
2. Press the (C) or (D) button on the transmitter for one second (1").
3. Press the same button you pressed in step 2 for one second (1").
4. The Green LED will flash five times (x5).

4. LINK/REMOVE AN ADDITIONAL TRANSMITTER

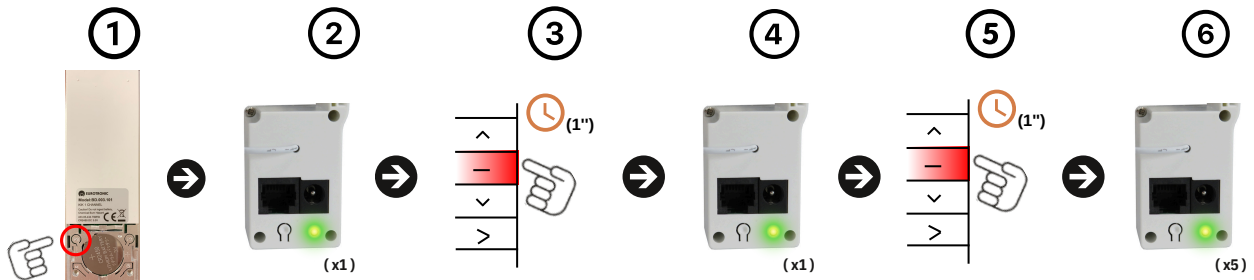


Procedure:

1. Press the button (P2) located behind the already linked transmitter (A).
2. The motor LED will blink (x1).
3. We will press the button (P2) of the same transmitter (A) again.
4. The motor LED will blink (x1).
5. Then press the (P2) button on the new transmitter (B) to confirm.
6. The motor LED will blink five times (x5).

Use the same process to delete a remote

5. ADD/DELETE FAVORITE POSITION

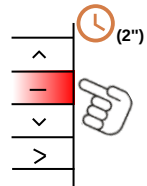


Procedure:

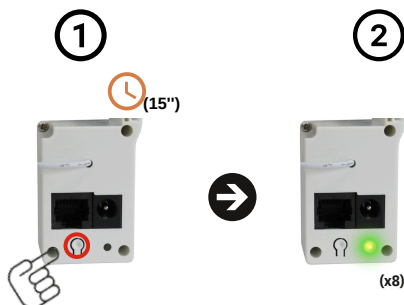
We will position the motor in the desired favorite position using the up or down button on the transmitter.

1. We will press the button (P2) located behind the transmitter.
2. The motor LED will blink (x1).
3. We will press the central button (STOP).
4. The motor LED will blink (x1).
5. We will press the central button (STOP) for the second time to confirm.
6. The motor LED will blink five times (x5).

To search for the favorite position, press the (STOP) button for two seconds.



6. RESET TO FACTORY MODE



Procedure:

1. Press the (PROG.) button on the motor head for fifteen seconds (15").
2. The green LED on the motor will flash eight times (x8).



www.eurotronic-europe.com

C/Pica d'Estats, 108-118 Poligono Industrial Sant Isidre
08272 Sant Fruitós de Bages (Barcelona) SPAIN

pedidos@eurotronic-europe.com Tel: +34 932 420 108